



Waynesville, North Carolina

Mini-Park Sign

REQUEST FOR QUOTATION

BIDS ARE DUE THURSDAY, APRIL 5, 2012 AT 2:00 PM

Project Requirements

The Public Art Commission of Waynesville, North Carolina seeks a professional company to manufacture, transport, and install a commemorative sign built to the provided specifications. The sign must be installed and accepted by a Town representative no later than **Wednesday, July 18, 2012**. An earlier installation is acceptable.

The award process is managed by the Public Art Commission of Waynesville, NC, a non-profit commission of appointed citizens working under the Waynesville Board of Aldermen. The Public Art Commission will review the bids received and make a recommendation to the Board of Aldermen for award at their meeting on April 24th. The successful bidder will be notified on Wednesday, April 25, 2012.

Deadline: All materials must be delivered by **2:00 p.m. on April 5, 2012**.
Envelope must indicate materials are for the Public Art Commission.

Mail to: **Waynesville Public Art Commission**
P.O. Box 100
Waynesville, NC 28786

Hand deliver to: **Waynesville Public Art Commission**
Town of Waynesville Municipal Building
16 South Main Street
Waynesville, NC 28786

Questions regarding the details of this Request for Quotations should be directed to Jan Griffin, Chairman of the Public Art Commission at (828) 246-8188.

Waynesville Purchasing General Conditions

1. All bids and proposals shall be for furnishing apparatus, supplies, materials, and equipment in accordance with the applicable specifications prescribed by the Town of Waynesville.
2. The Town of Waynesville and the Public Art Commission reserves the right to accept or reject any or all bids and proposals and further specifically reserves the right to make the award or awards in the best interest of the Town of Waynesville.
3. Bid Evaluation and Selection of Bids - The evaluation of bids shall center on the match between the stated specification requirements in the bid request and the vendor's proposal, including the selection of the lowest responsible/responsive bidder, with consideration of past performance, service record, and reliability.

The statutory provision in controlling purchasing by local governments, in N.C G.S. 143 includes selection standards for use in making awards. The provision reads, "All contracts shall be awarded to the lowest responsible bidder, taking into consideration quality, performance and the time specified in the bids for performance of the contract."

Bids will be awarded on a per item basis unless otherwise indicated, taking into consideration all requirements of the bid.

4. If mail or delivery by any other means is delayed beyond the date and hour set for the bid submittal deadline, the affected proposal will not be considered.



Waynesville, North Carolina

Mini-Park Sign REQUEST FOR QUOTATION

SEALED Bids are due Thursday, April 5, 2012 at 2:00 pm
Envelope must indicate materials are for the Public Art Commission

Date: _____

Sign Cost, per Specifications \$ _____.

By signing and submitting this Proposal, the undersigned declares that they have examined the complete requirements of this request for Quotation and, if awarded, will furnish and deliver to the Town of Waynesville all equipment and services listed in the Town's Specifications and all Bidder-supplied Documentation including, but not limited to specifications/exception/schematics, and complete installation by Wednesday, July 18, 2012.

Bidding Company: _____

Authorized Representative (Printed Name): _____

Signature: _____

Complete Address: _____

Phone: _____ Fax: _____

Email Address: _____

Mail to: **Waynesville Public Art Commission**
P.O. Box 100
Waynesville, NC 28786

Hand deliver to: **Town of Waynesville Municipal Building**
16 South Main Street
Waynesville, NC 28786

Design for Commemorative Arch for Waynesville Mini Park

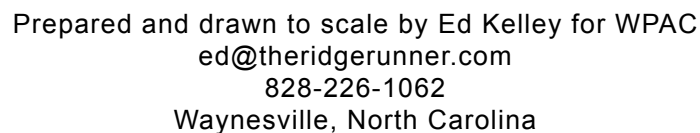
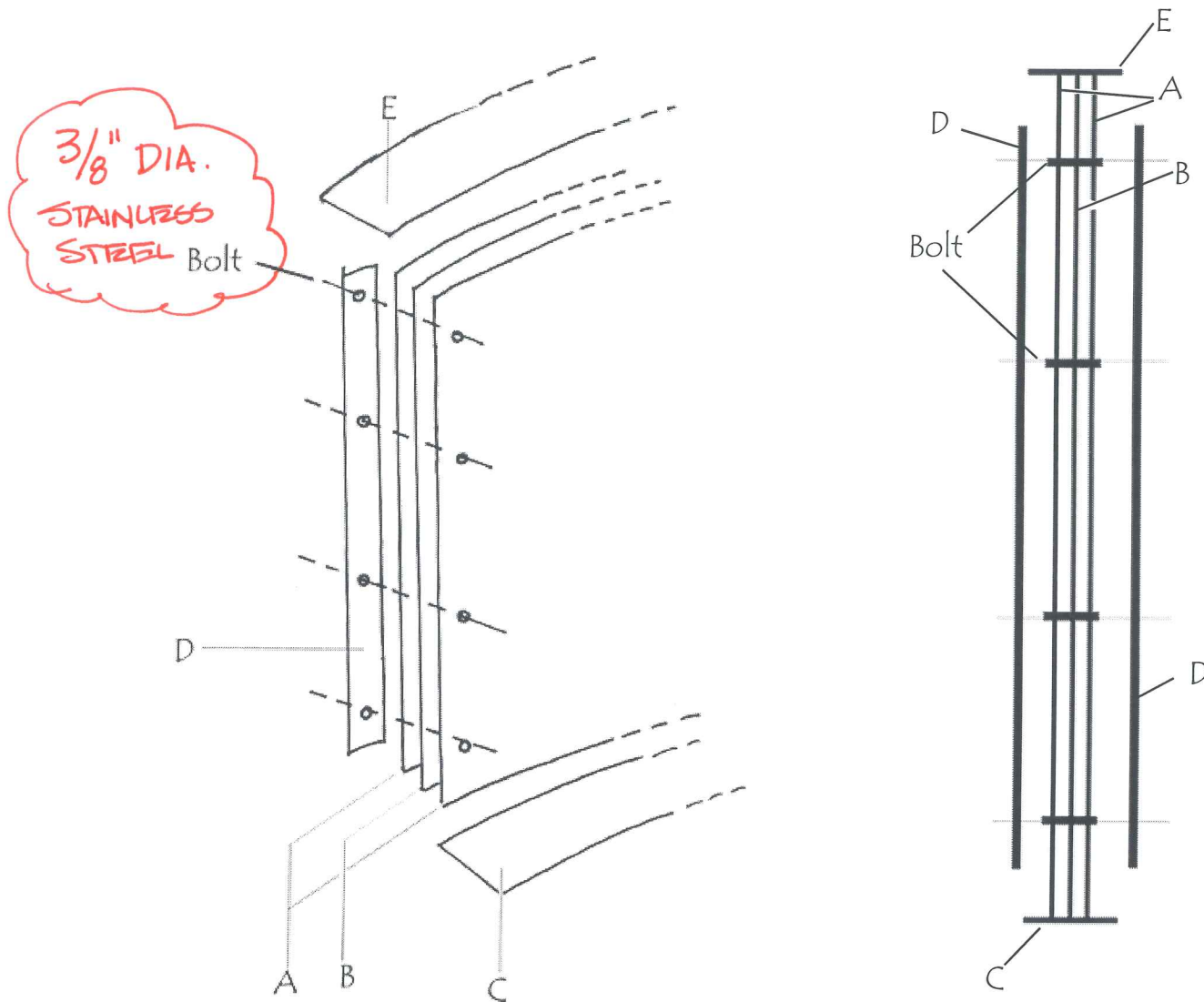


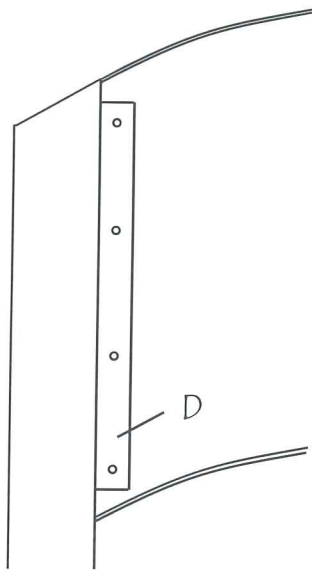
Diagram II, Detail of Arch Construction, Main Panels



- A. Identical panels, front & back. To include laser cut lettering as specified. 1/4" steel, powder coated. Panels should be assembled as single unit (Parts A, B, C, E) separate from posts. Only "D" should be permanently welded to posts. Finished project will consist of 2 identical posts and the assembled arch.
- B. Center panel of brushed aluminum, clear powder coat for corrosion resistance
- C. Bottom rib, 1/4" steel, powder coated. 4" wide, follow same arc as panels (13' radius)
- D. Mounting bracket/flange welded on post 1/2" steel powder coated. Approximately 3" wide--(see diagram III)
- E. Top rib, 1/4" steel, powder coated. 4" wide, follows same radius arc as panels (13' radius)

Important note: 1/4" spacing between A-B-A for drainage. Bottom rib should be constructed with appropriately placed weep holes to accommodate drainage. All bolts, spacers, or other connectors will be rust and corrosion resistant.

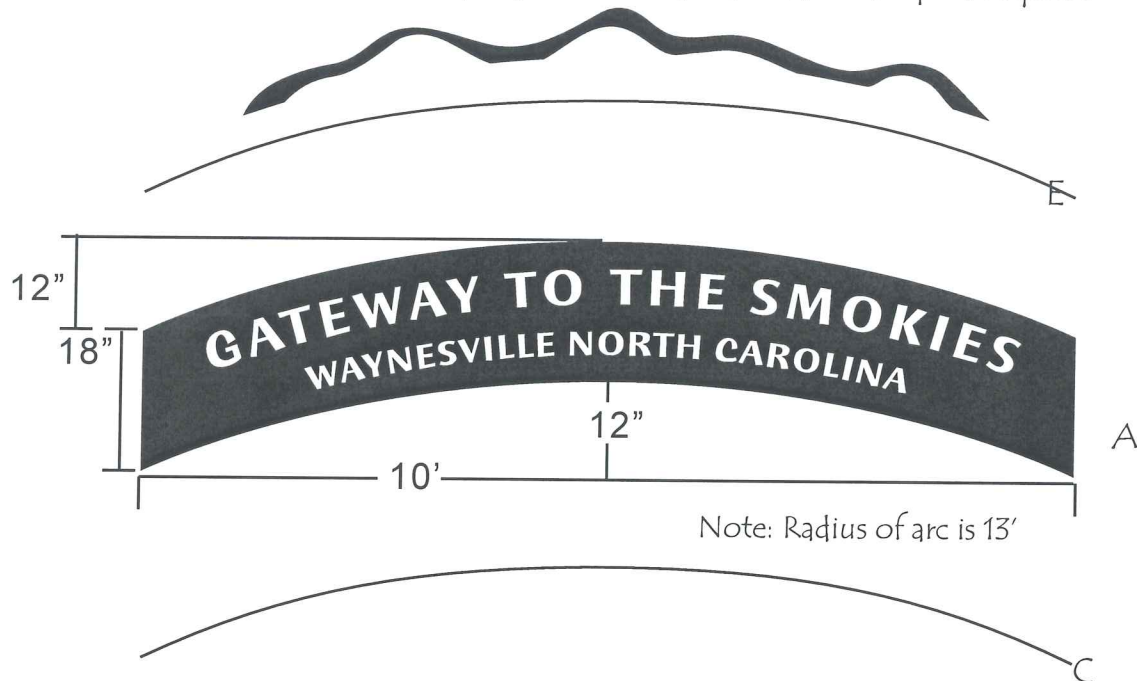
Diagram III, Detail of Arch Construction, Main Panels Front View



All exposed steel will be powercoated for outdoor use, with proper rust-proof priming, in crinkle black.
All bolts and connectors must be of rust and corrosion resistant materials.

Fonts and lettering used must be approved by the Waynesville Public Art Commission before the lettering is cut into the metal.
(Humana Sans ITC Bold shown)

Full-size diagram of mountain silhouette for top of arch is available in file format (PDF, Adobe Illustrator, EPS, etc.) upon request



- A. Identical panels, front & back. To include laser cut lettering as specified. 1/4" steel, powder coated. Panels should be assembled as single unit (Parts A, B, C, E) separate from posts. Only "D" should be permanently welded to posts. Finished project will consist of 2 identical posts and the assembled arch.
- C. Bottom rib, 1/4" steel, powder coated. 4" wide, follow same arc as panels (13' radius)
- D. Mounting bracket/flange welded on post, 1/2" steel, powder coated. Approximately 3" wide--(see diagram III)
- E. Top rib, 1/4" steel, powder coated. 4" wide, follows same radius arc as panels (13' radius)

Diagram IV, Detail of Arch Construction, Main Panels

Horizontal Cross-Section for Panel Mounts

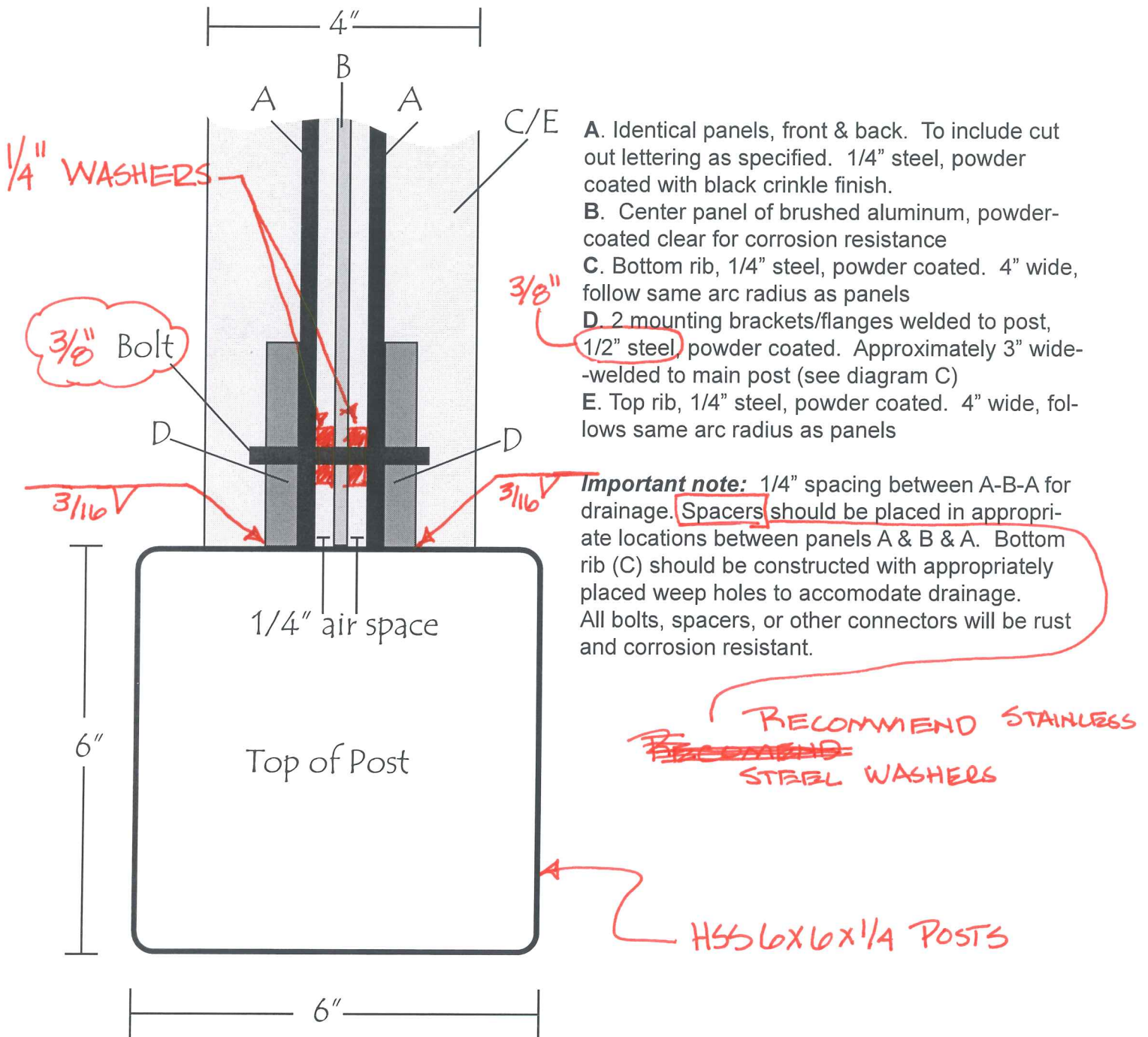


Diagram V, Detail of Arch Construction, Base Flange

Horizontal Cross-Section, See Diagram V for Side View

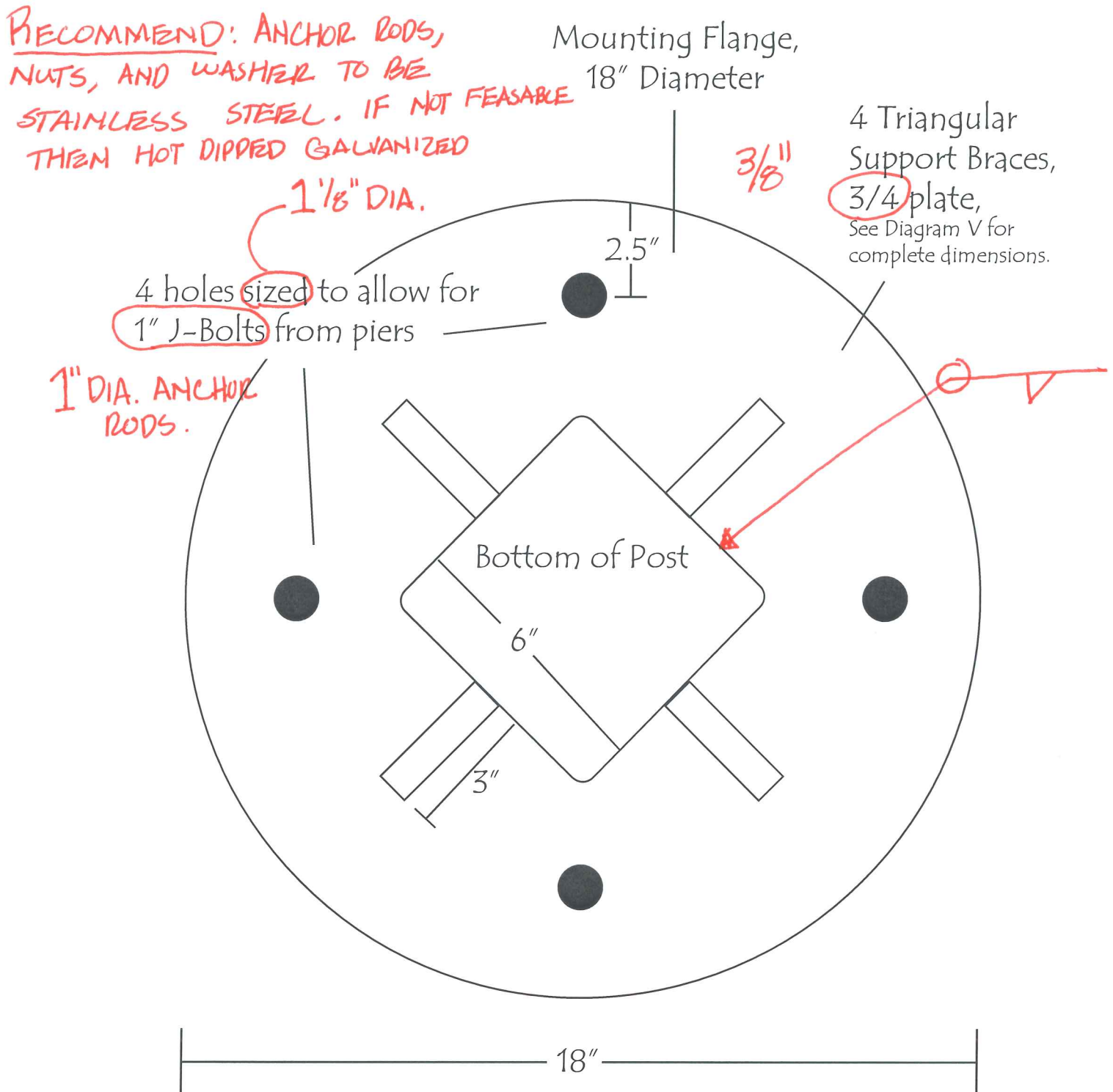
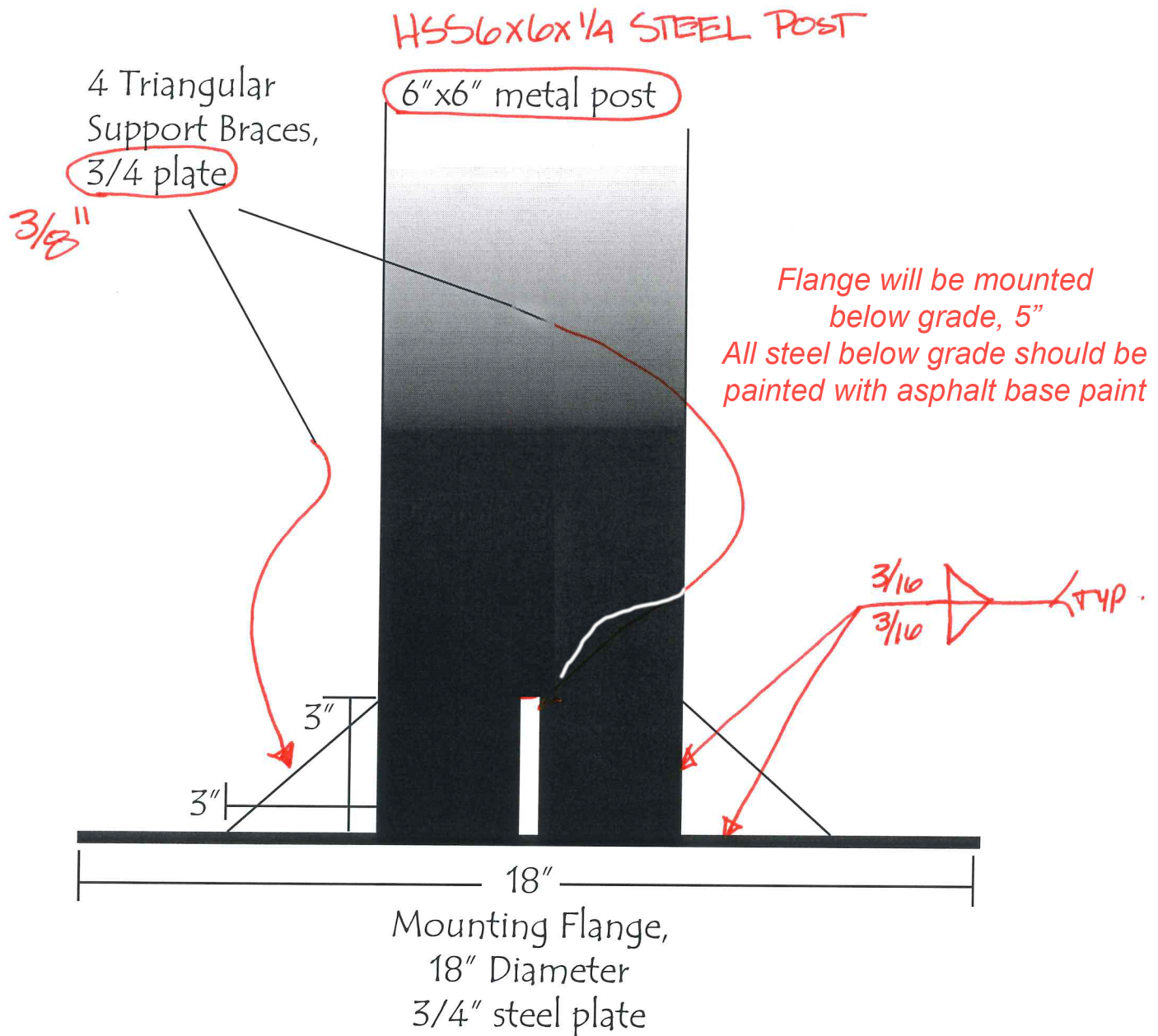


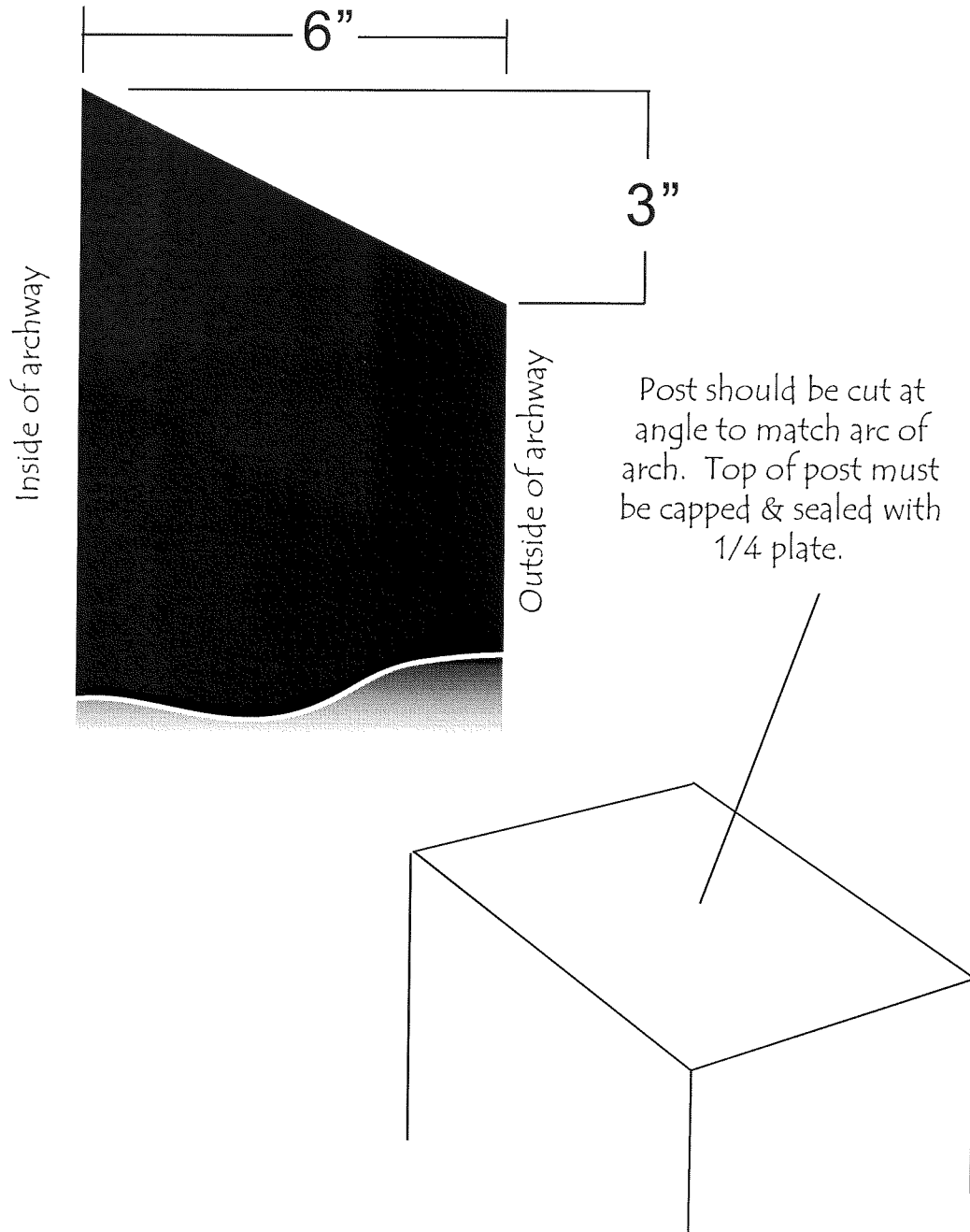
Diagram VI, Detail of Arch Construction, Base Flange

Side View, See Diagram V for Cross Sectional View



- HSS POSTS SHALL CONFORM TO ASTM A500 GRADE B, $F_y = 46 \text{ ksi}$
- PLATES SHALL CONFORM TO ASTM A36, $F_y = 36 \text{ ksi}$
- REINFORCING STEEL (REBAR) SHALL CONFORM TO ASTM A615, GRADE 60
- CONCRETE SHALL BE NORMAL WEIGHT w/ 28 DAY COMPRESSIVE STRENGTH OF 3000 PSI

Diagram VII, Detail of Arch Construction, Top of Post



SUTTON-KENNERLY & ASSOCIATES, INC.



Project Name: T.O.W. NEW ARCH

Project No: _____

Subject: FOUNDATION

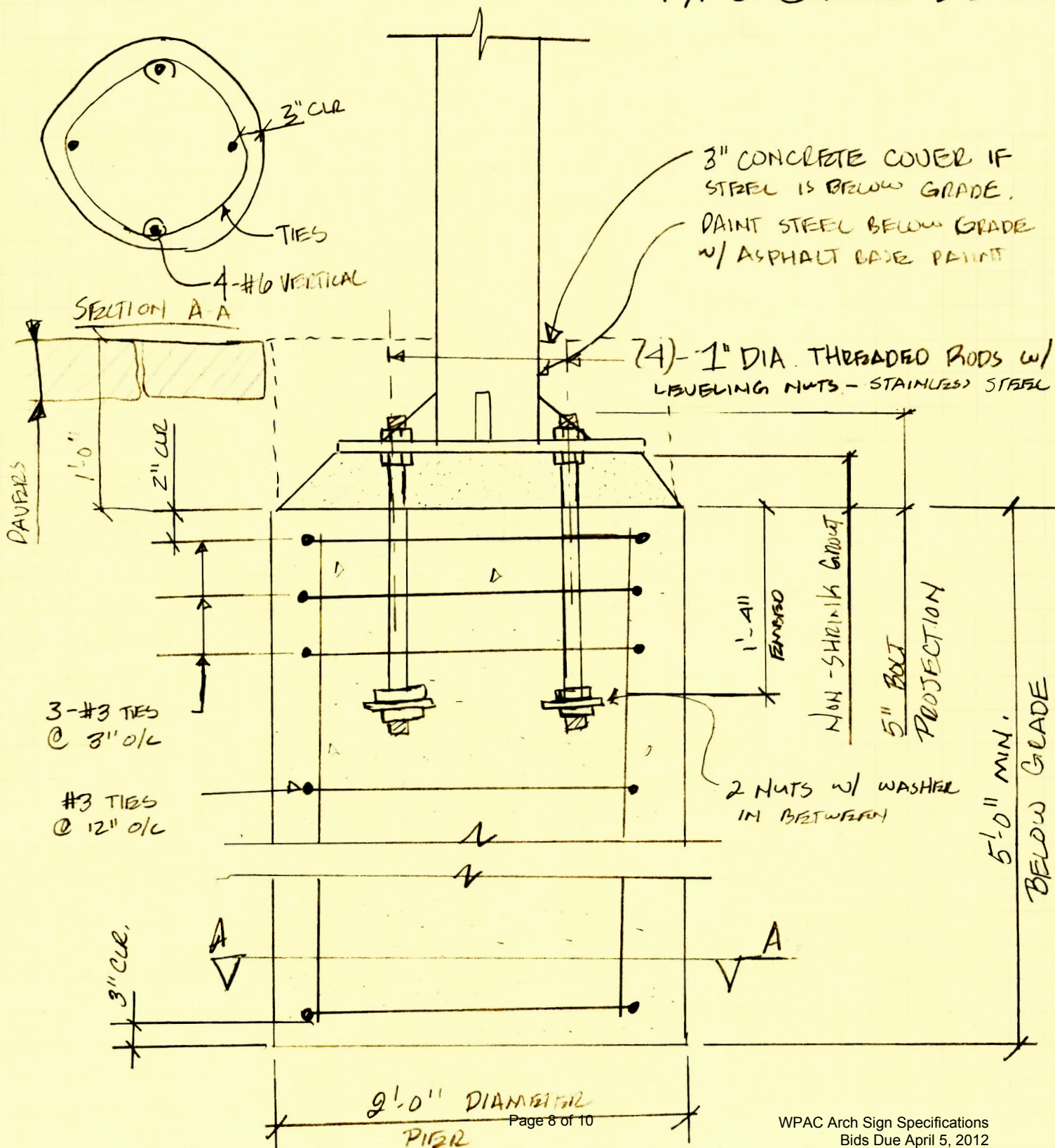
Designed By: DPF

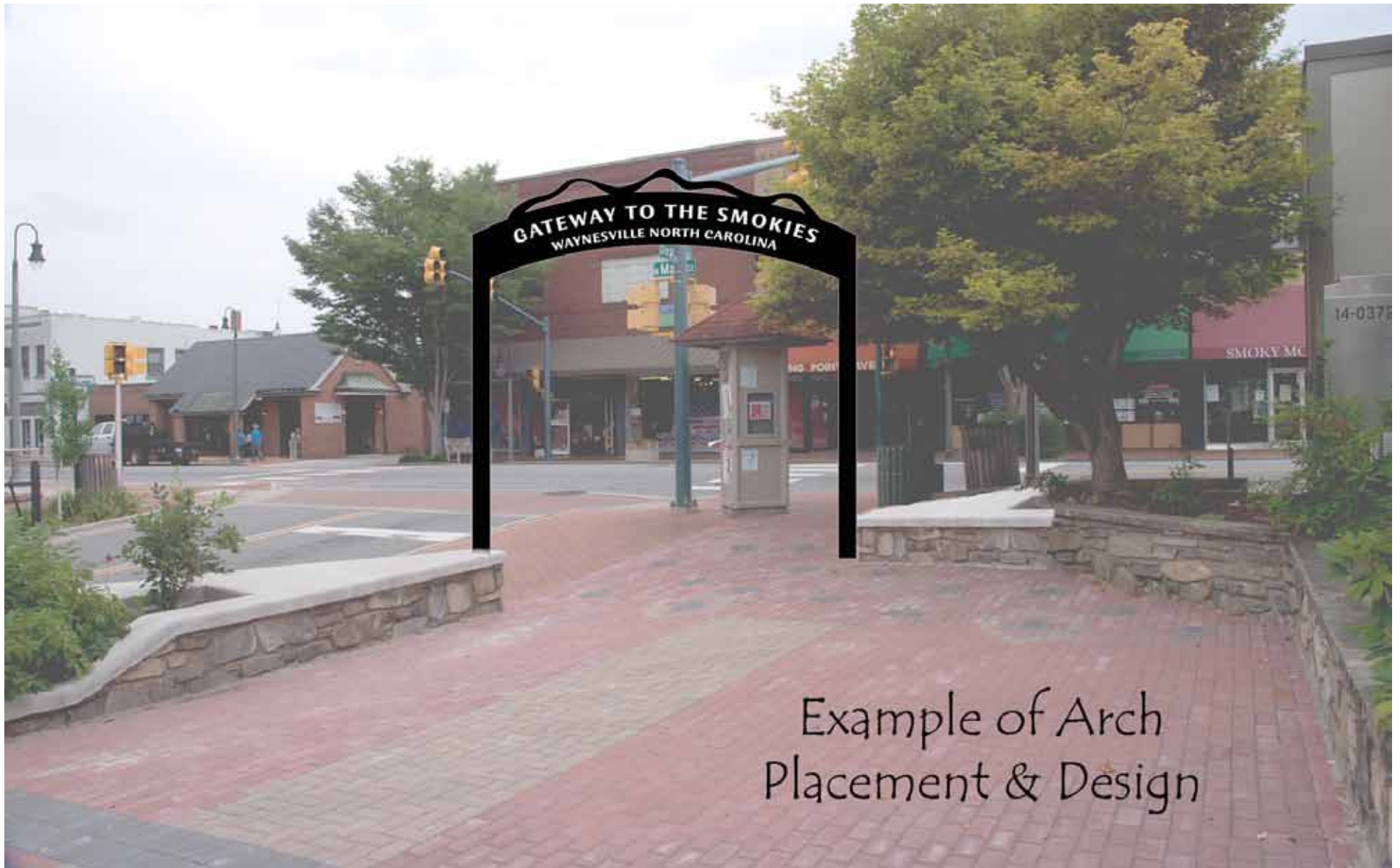
Checked By: _____

Date: 1/11/2012

Sheet No: _____

TYPICAL PIER DETAIL





Example of Arch Placement & Design

